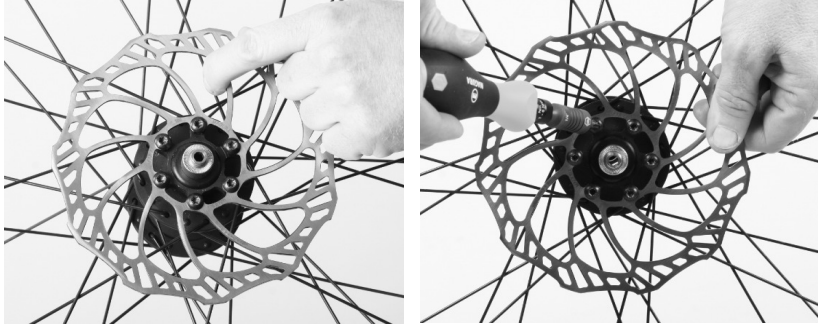




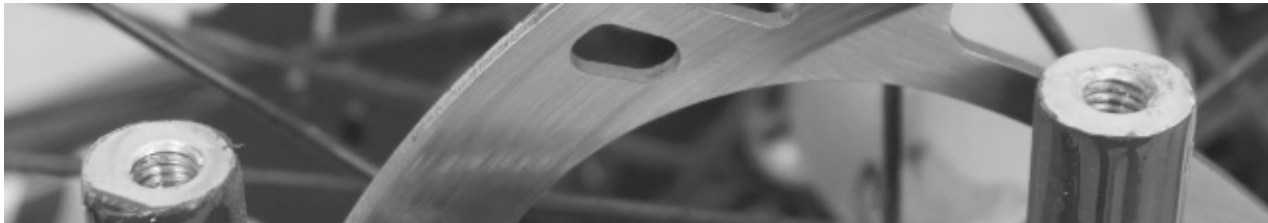
MAGURA

Mounting tip MAGURA disc brake

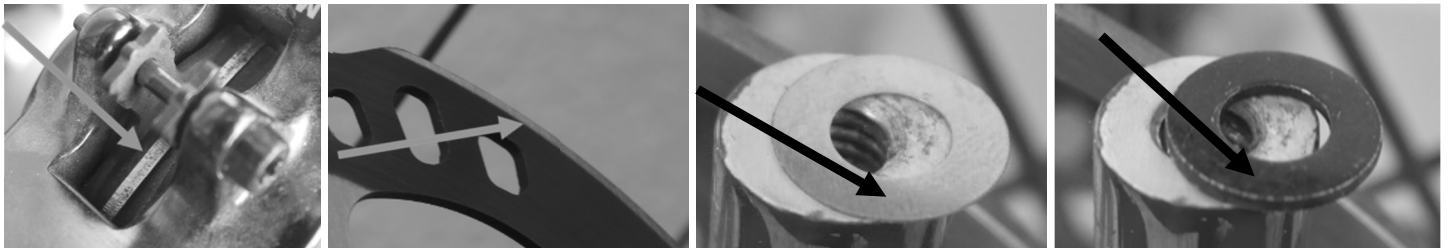
Center the rotor on the hub, turn it clockwise on the hub then fix it.



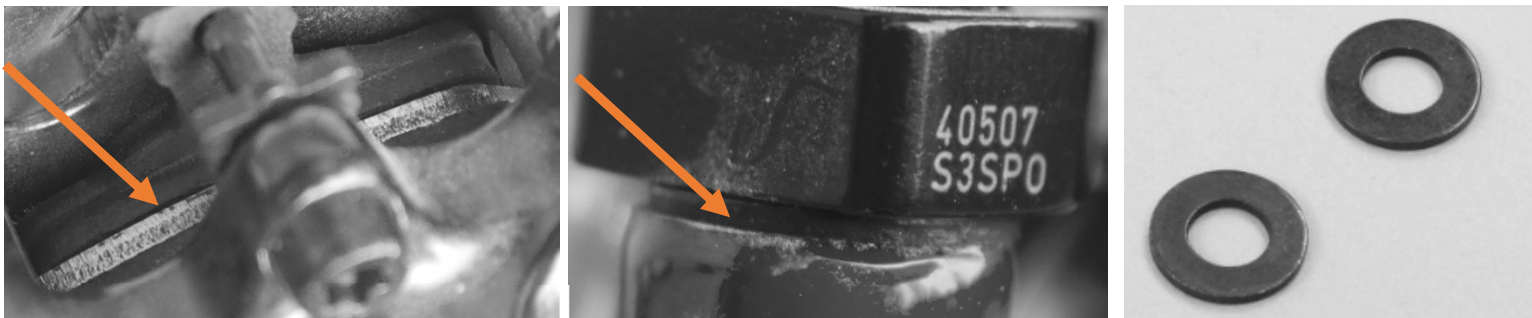
Attention: Tighten the screws across, NOT in a row, with 4Nm.



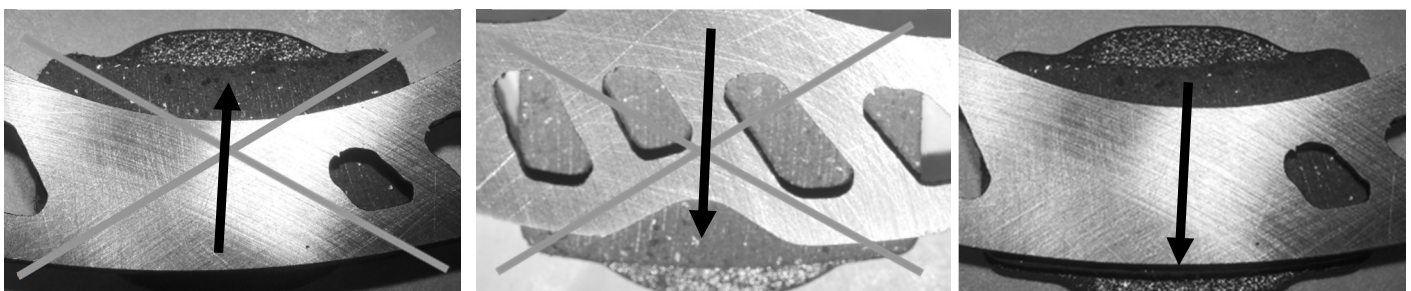
Check the surface of the PM and if necessary remove the paint, make sure that the contact surface will be clear.



Check and control, that after you mount the caliper, the contact surface to the rotor will not be too deep.. If necessary use a washer between the PM mount and the caliper. You may use the 0,2mm (0720917) or 1mm spacer (0721313).



Take care that the brake pad will NOT sit too deep or too high.



To low

to high

Perfect